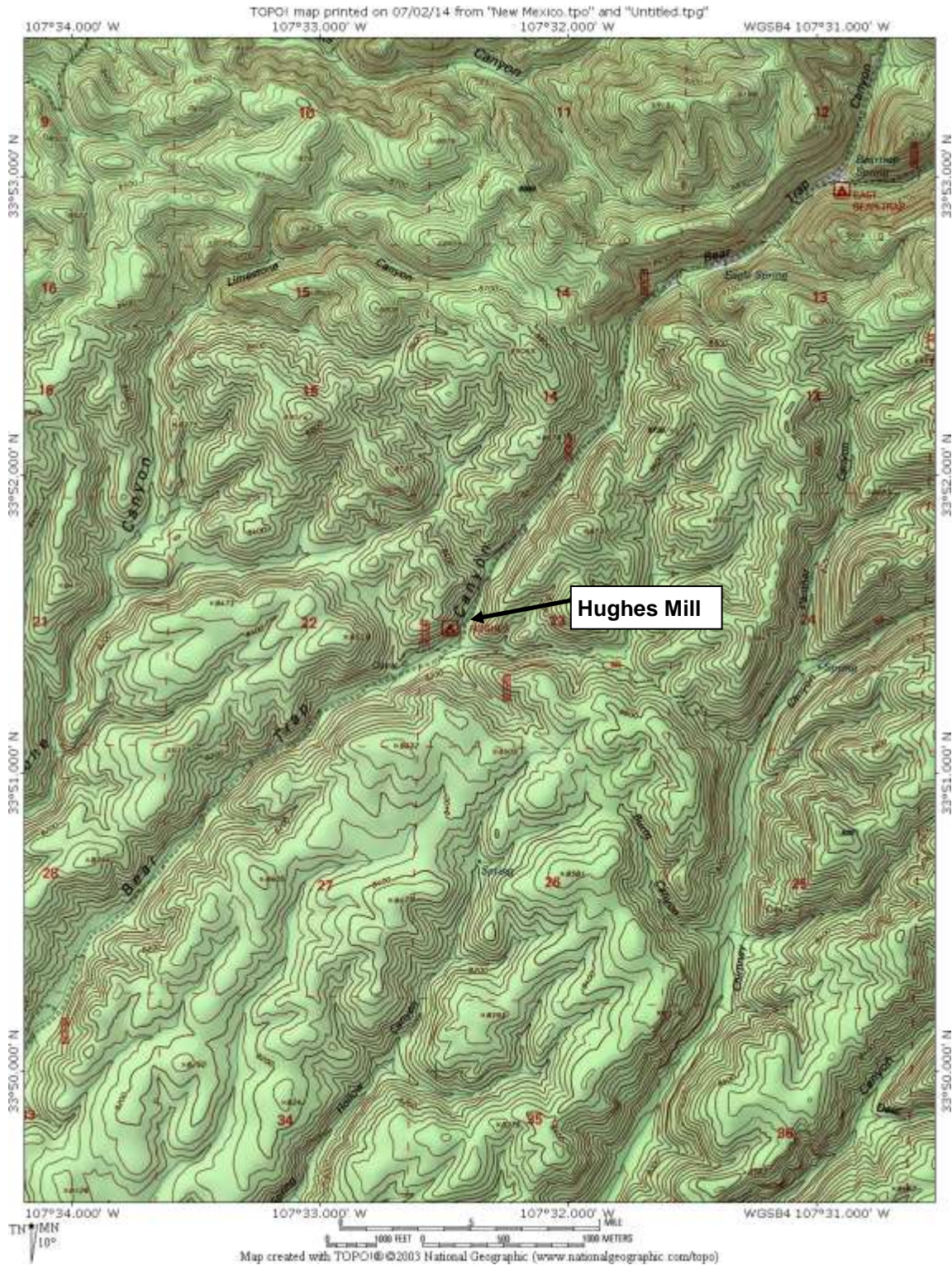


FOLLOWING THE WARPATH: Bear Trap Canyon



Hughes Mill fits with my reconstruction of Nana's route back into the mountains, but it seems unlikely there was a ranch just a mile down the canyon from the site.



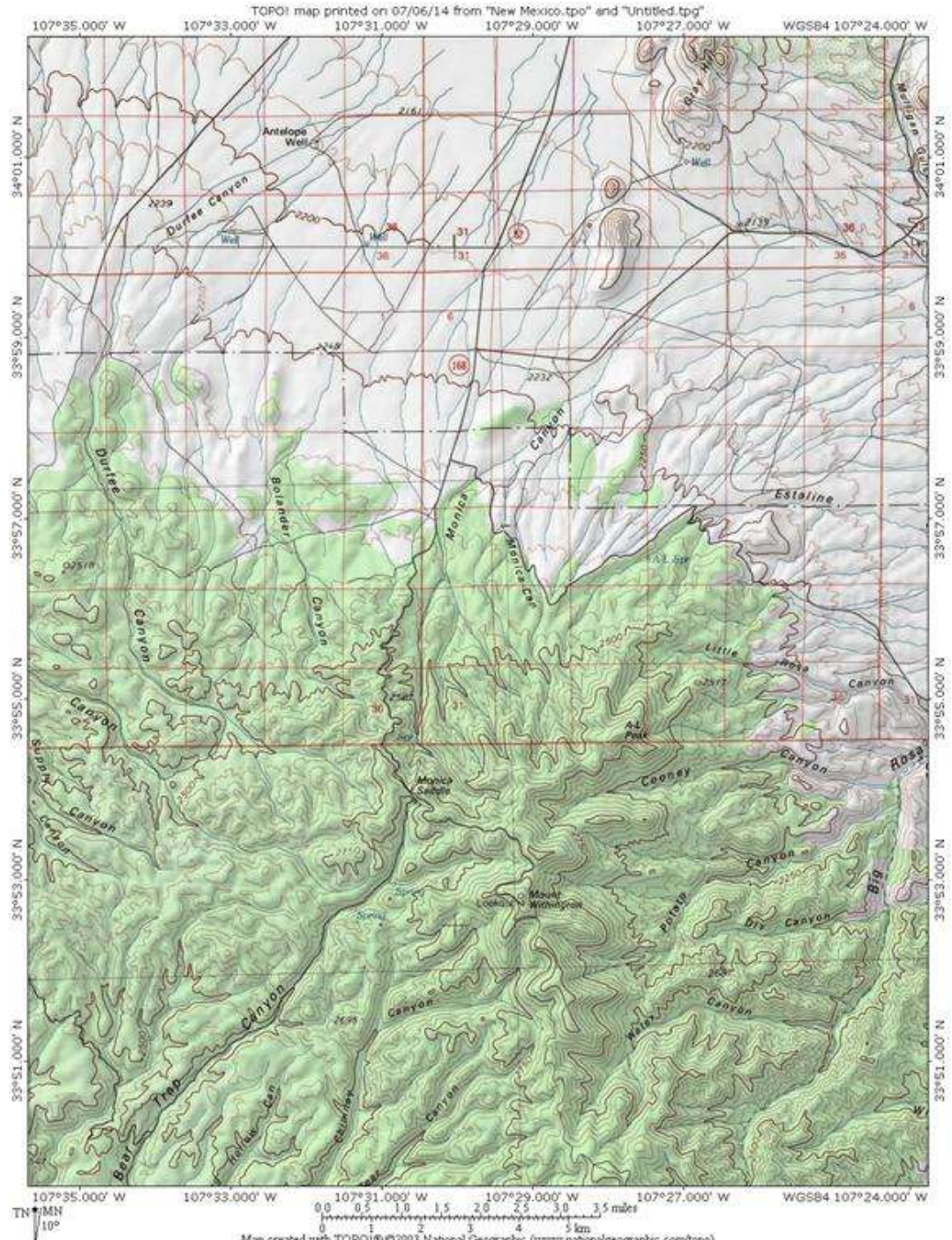
Hughes Mill CG (two picnic tables w/fire rings + a pit toilet, no fee) is in the transition zone between ponderosa pine, oak and piñon



No field stone foundations or other evidence of former occupancy to be found, and the dry creek bed doesn't look like it ever could have provided enough water to run a mill. Plus, the site is so far up the canyon that I question whether there was ever a ranch, much less two ranches, within a couple miles. But this particular location fits my reconstruction of Nana's trajectory through the San Mateos, and it's a pleasant spot, quiet and shaded, high enough to be cool in the day but not too cold at night.



Bear Trap CG is situated at the head of the canyon, just before the road begins the steep ascent to Monica Saddle. The campground has four shady campsites with fire-rings and picnic tables, pit toilet, some flat ground suitable for tents.



Map created with TOPOI © 2003 National Geographic (www.nationalgeographic.com/topo)

FR168 from Bear Trap Canyon over Monica Saddle and down into Monica Canyon is steep and narrow, with numerous hairpin turns and no shoulders to speak of. You're wise to inquire at the Magdalena Ranger Station before attempting it, especially during the monsoon season.